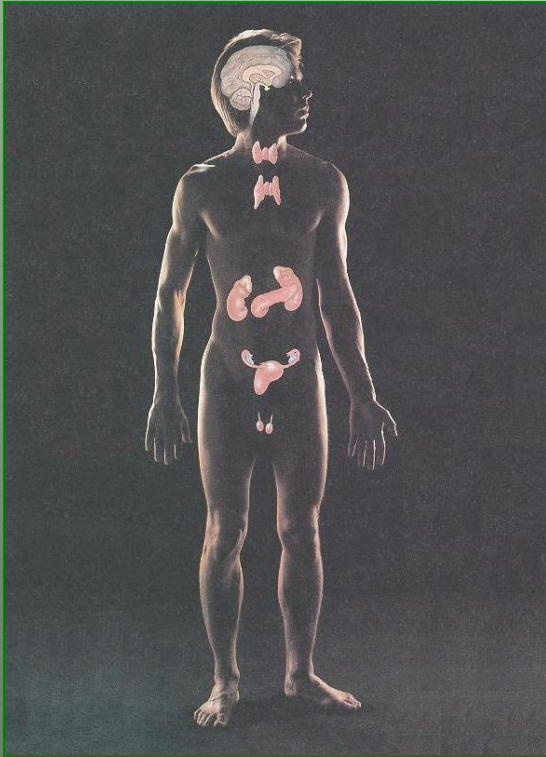


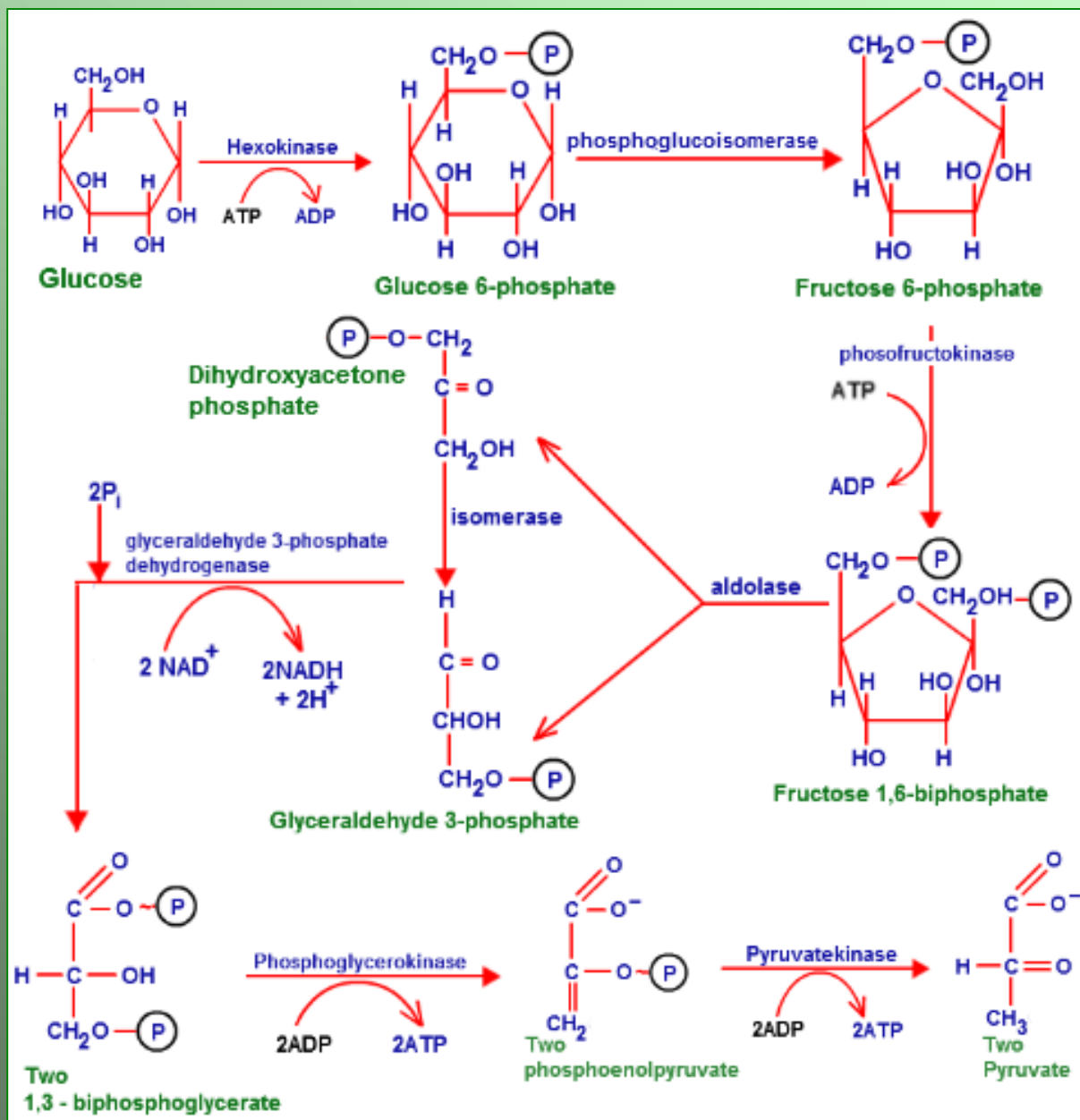
Why Faith and Science Integration Matters to Me



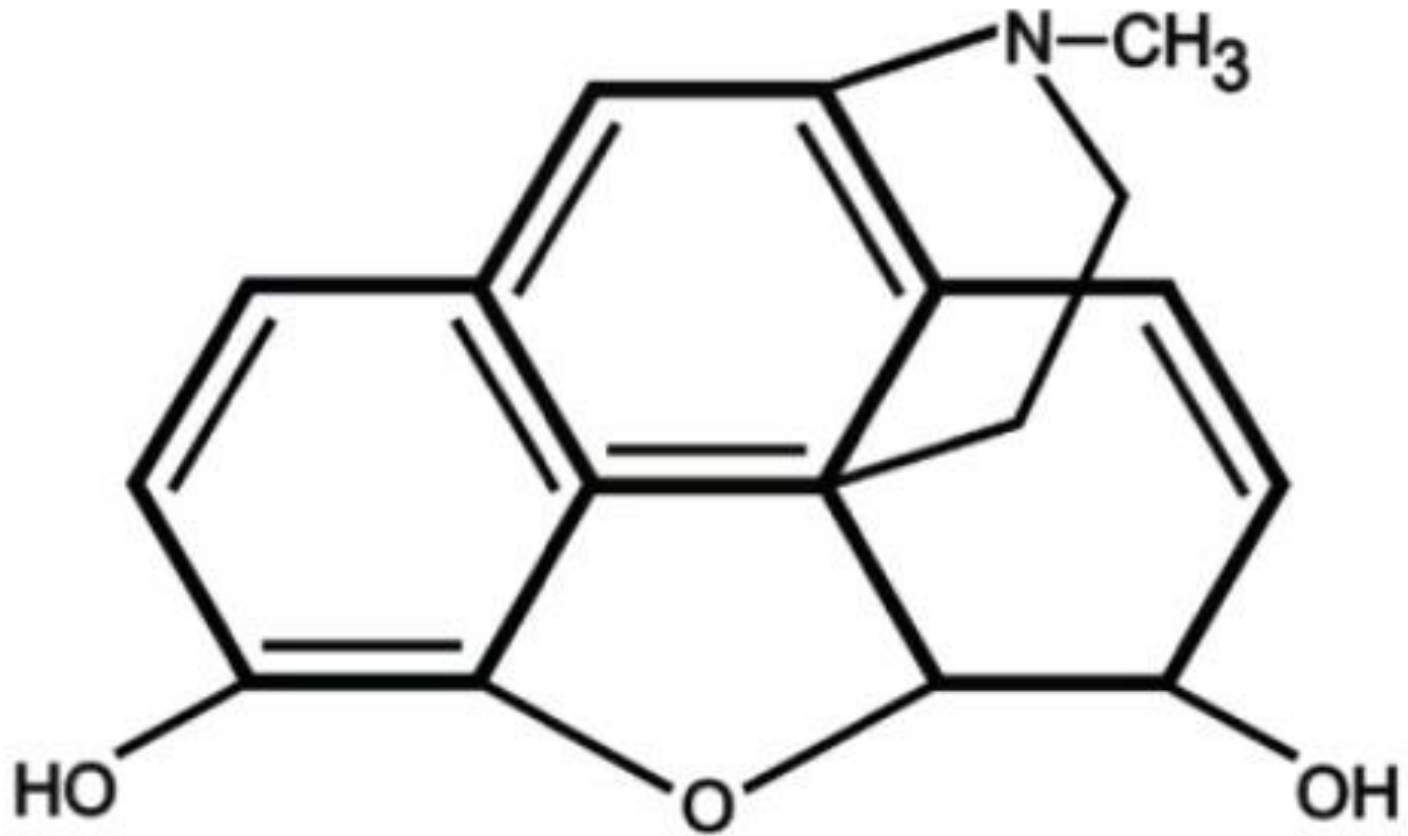




GLYCOLYSIS



MORPHINE

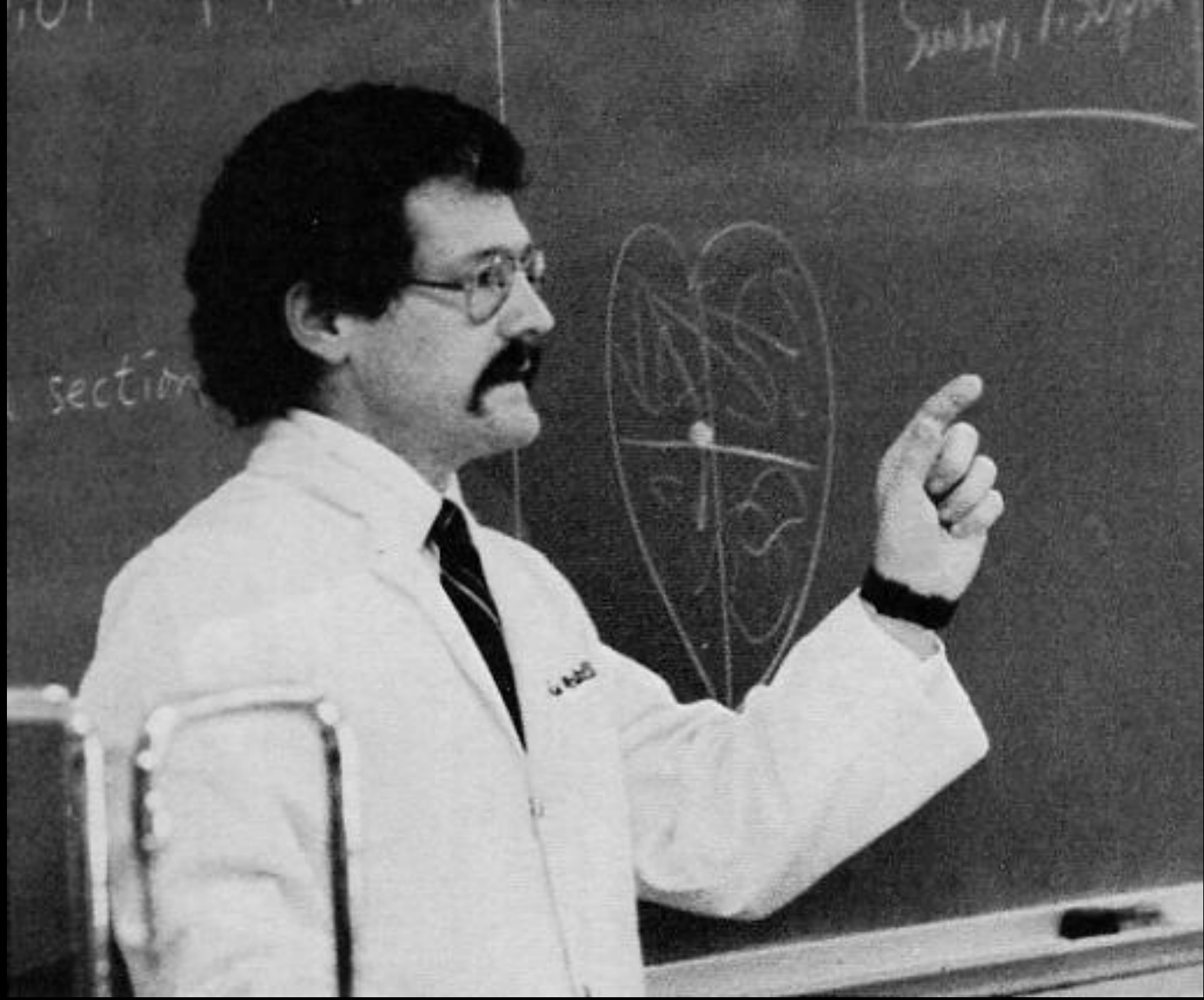




ABORTION



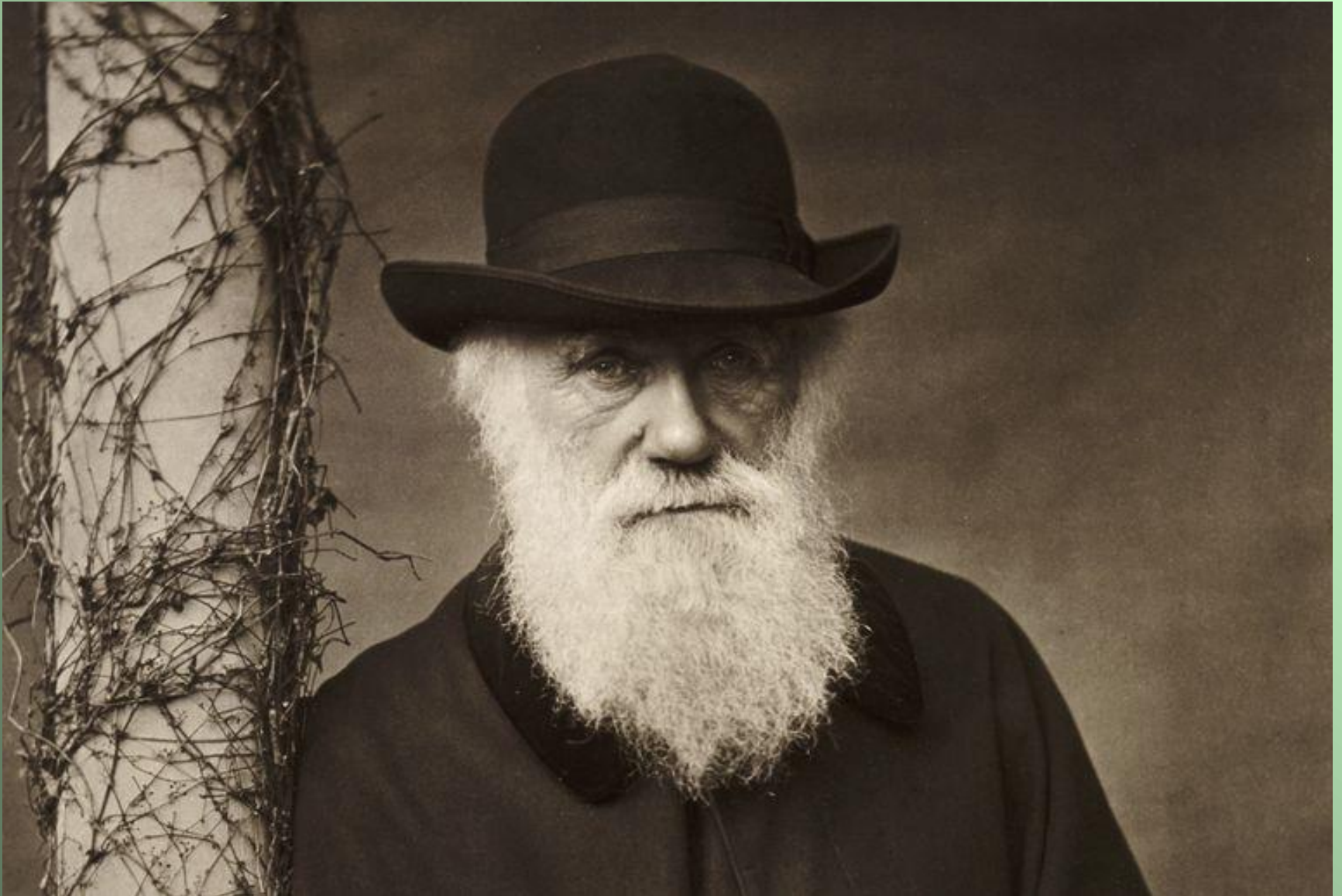
- What is the value of an unborn child?
- When does a human life begin?
- Under what circumstances is it better that a child is not born alive?
- What ethical issues do advances in biotechnology raise?

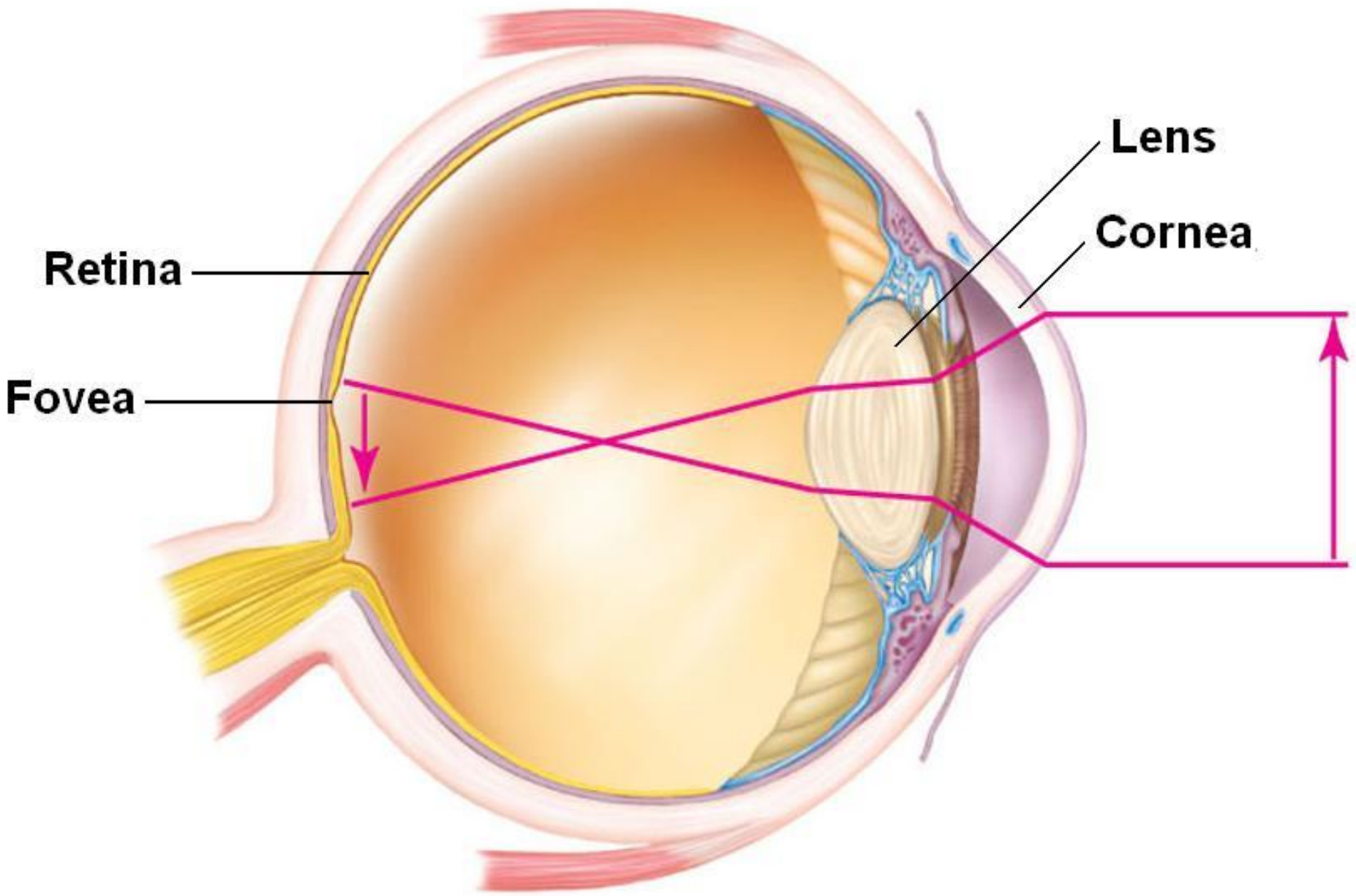


Rejoice
always

1 THESSALONIANS 5:16

CHARLES DARWIN





Retina

Fovea

Lens

Cornea

PSALM 139:13-14

¹³For you created my inmost being;

you knit me together in my mother's womb.

¹⁴I praise you because I am fearfully and wonderfully made;
your works are wonderful, I know that full well.

MATT 12:9-13

¹⁰Looking for a reason to accuse Jesus, they asked Him, “Is it lawful to heal on the Sabbath?” ¹¹He said to them, “If any of you has a sheep and it falls into a pit on the Sabbath, will you not take hold of it and lift it out? ¹²How much more valuable is a man than a sheep! Therefore it is lawful to do good on the Sabbath.”

MATT 6:25-27

²⁶“Look at the birds of the air; they do not sow or reap or store away in barns, and yet your heavenly Father feeds them. Are you not much more valuable than they? ²⁷ Who of you by worrying can add a single hour to his life?”

LUKE 8:26-39

³²A large herd of pigs was feeding there on the hillside. The demons begged Jesus to let them go into them, and He gave them permission. ³³When the demons came out of the man, they went into the pigs, and the herd rushed down the steep bank into the lake and was drowned.





INTERVARSITY

GRADUATE & FACULTY MINISTRIES



On the Physical Death of Jesus Christ

William D. Edwards, MD; Wesley J. Gabel, MDiv; Floyd E. Hosmer, MS, AMI

• Jesus of Nazareth underwent Jewish and Roman trials, was flogged, and was sentenced to death by crucifixion. The scourging produced deep stripelike lacerations and appreciable blood loss, and it probably set the stage for hypovolemic shock, as evidenced by the fact that Jesus was too weakened to carry the crossbar (patibulum) to Golgotha. At the site of crucifixion, his wrists were nailed to the patibulum and, after the patibulum was lifted onto the upright post (stipes), his feet were nailed to the stipes. The major pathophysiologic effect of crucifixion was an interference with normal respirations. Accordingly, death resulted primarily from hypovolemic shock and exhaustion asphyxia. Jesus' death was ensured by the thrust of a soldier's spear into his side. Modern medical interpretation of the historical evidence indicates that Jesus was dead when taken down from the cross.

(*JAMA* 1986;255:1455-1463)

THE LIFE and teachings of Jesus of Nazareth have formed the basis for a major world religion (Christianity), have appreciably influenced the course of human history, and, by virtue of a compassionate attitude toward the sick, also have contributed to the development of modern medicine. The crucifixion of Jesus, as a

credibility of any discussion of Jesus' death will be determined primarily by the credibility of one's sources. For this review, the source material includes the writings of ancient Christian and non-Christian authors, the writings of modern authors, and the Shroud of Turin.¹⁻¹⁰ Using the local historical method of scientific

Talmud, and by the Jewish historian Flavius Josephus, although the authenticity of portions of the latter is problematic.¹⁶

The Shroud of Turin is considered by many to represent the actual burial cloth of Jesus,²² and several publications concerning the medical aspects of his death draw conclusions from this assumption.^{23,24} The Shroud of Turin and recent archaeological findings provide valuable information concerning Roman crucifixion practices.²²⁻²⁴ The interpretations of modern writers, based on a knowledge of science and medicine not available in the first century, may offer additional insight concerning the possible mechanisms of Jesus' death.^{23,24}

When taken in concert, certain facts—the extensive and early testimony of both Christian proponents and opponents, and their universal acceptance of Jesus as a true histori-



Medical Aspects of The Crucifixion

A presentation by
Dr. Kip McGilliard
Dept. of Biological Sciences

Tuesday, April 15, 8:00 pm
Charleston-Mattoon Room
MLK Union

Sponsored by CRU@EIU



IN MEMORY OF

REAGAN DIETER

1994-2019

